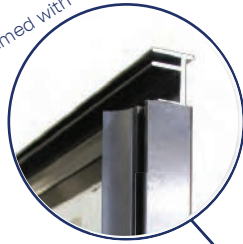


# SOLID Solrif®

Glass / Glass

In-Roof

Framed with Solrif®



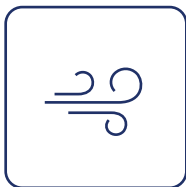
Self-cleaning effect



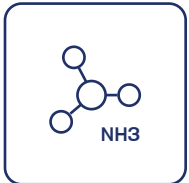
Salt mist resistance



Fire class A



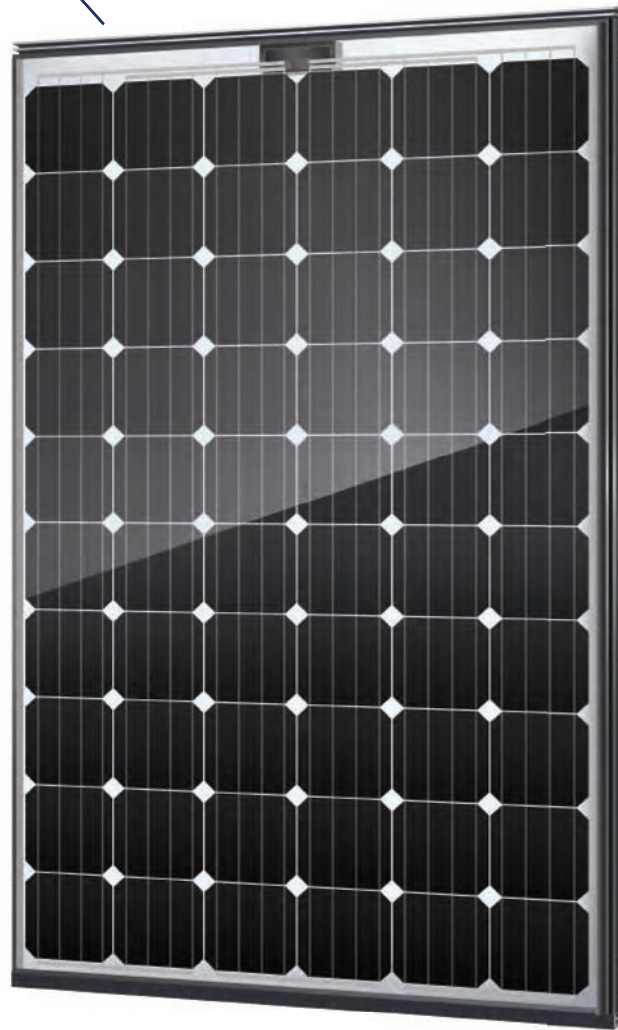
Dust & Sand resistance



Ammonia resistance



Extreme load resistance



Positive sorting up to +5W

**SOLITEK**

**Mono** ⚡ 310W

Mokslininku str. 6A,  
Vilnius 08412, Lithuania  
Tel. +370 5 263 8774  
info@solitek.eu  
www.solitek.eu

**30**

Product warranty

**87%**

Power guarantee

**30**

Efficiency guarantee

Electrical data (STC*)	
Maximum Power	<b>310</b>
Cell Technology	<b>Mono C-Si</b>
Open circuit voltage ( $V_{oc}/V$ )	41,02
Short circuit Current ( $I_{sc}/A$ )	9,55
Max Power Voltage ( $V_{mpp}/V$ )	33,48
Max Power Current ( $I_{mpp}/A$ )	9,71
Module Efficiency ( $\eta$ )	17,60%
Max System Voltage (V)	1500
Max Current (A)	15
Power Tolerance	0/+5W

\*Under Standart Test Conditions (STC) of irradiance of 1000W/sq. m., spectrum AM 1.5 and cell temperature of 25 C

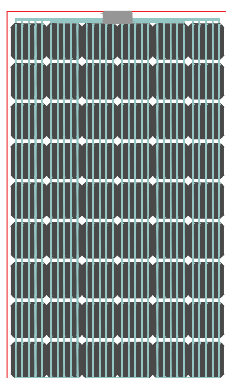
Flash testing measurement accuracy of +/- 5% All transparency values are approximate +/- 3%

Temperature ratings	Monocrystalline
Current temperature coefficient ( $\alpha$ )	+0,04% /° C
Voltage temperature coefficient ( $\beta$ )	-0,35% /° C
Power temperature coefficient ( $\delta$ )	-0,47% /° C
Nominal Operating Module Temperature	46° C

Mechanical data	
Dimensions (LxWxH) (mm)	1720x1024x17
Weight (kg)	30
Front / Back glass (mm)	3,15
Cell Type	Mono C-Si
Cell Size (mm)	156x156
Transparency %	10
Cell configuration	6x10
Busbars	5
Frame	Solrif®
Operating Temperature (°C)Max	-40 + +85
Load (wind/snow) (Pa) Junction	2400/5400
Box / IP Class	IP68
Cable Cross Section Size (mm <sup>2</sup> )	4
Bypass Diodes	3
Connector	MC4

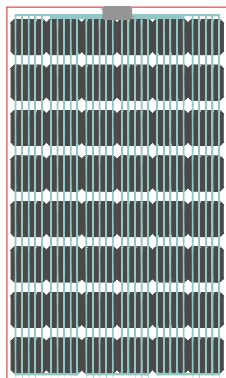
### Increased Module Transparency

20% (54) cells



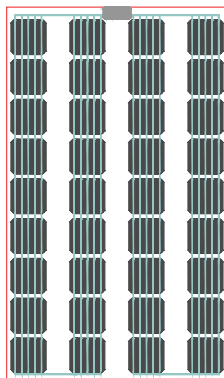
Configuration: 6x9

30% (48) cells



Configuration: 6x8

45% (36) cells



Configuration: 4x9

### Optimal Weather Lightness

Frames are shingled from top to bottom and are interlocking left to right much like tiles for optimal weather protection.

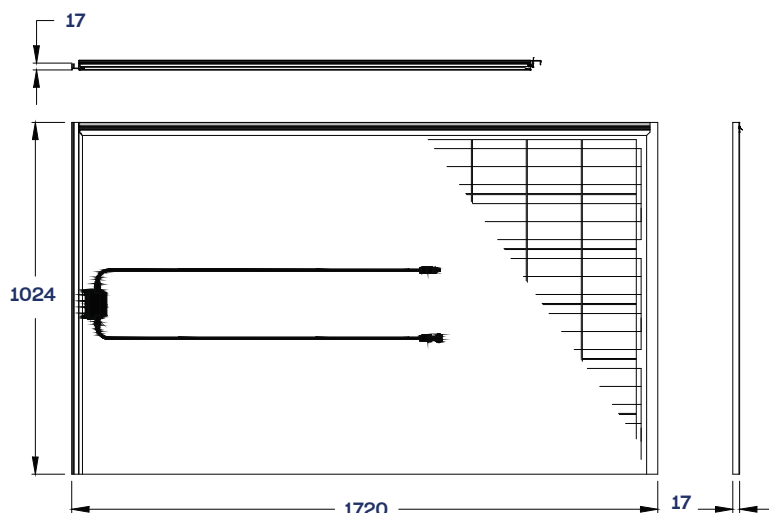
### Easy Installation

The modules are held by metal clamps that are mounted to the roof battens. This allows for quick and easy installation.

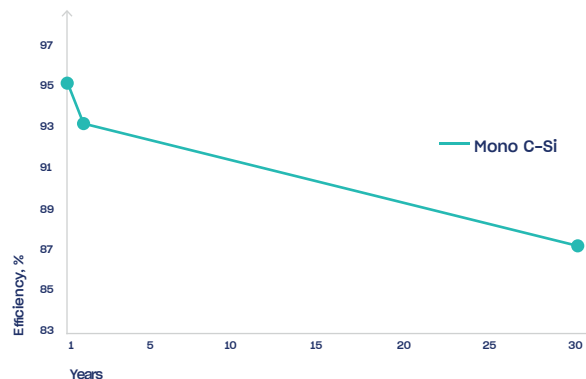


### Dimensions & Mounting

2400/5400 Pa



### Power output warranty



This datasheet is not legally binding. The manufacturer reserves the right to make changes to product specifications and/or product features without prior notice. The most recent versions of all documents (T&C's, datasheets, warranties, and installation manuals can always be found on our website at [www.solitek.eu](http://www.solitek.eu)).

### Certificates and memberships

